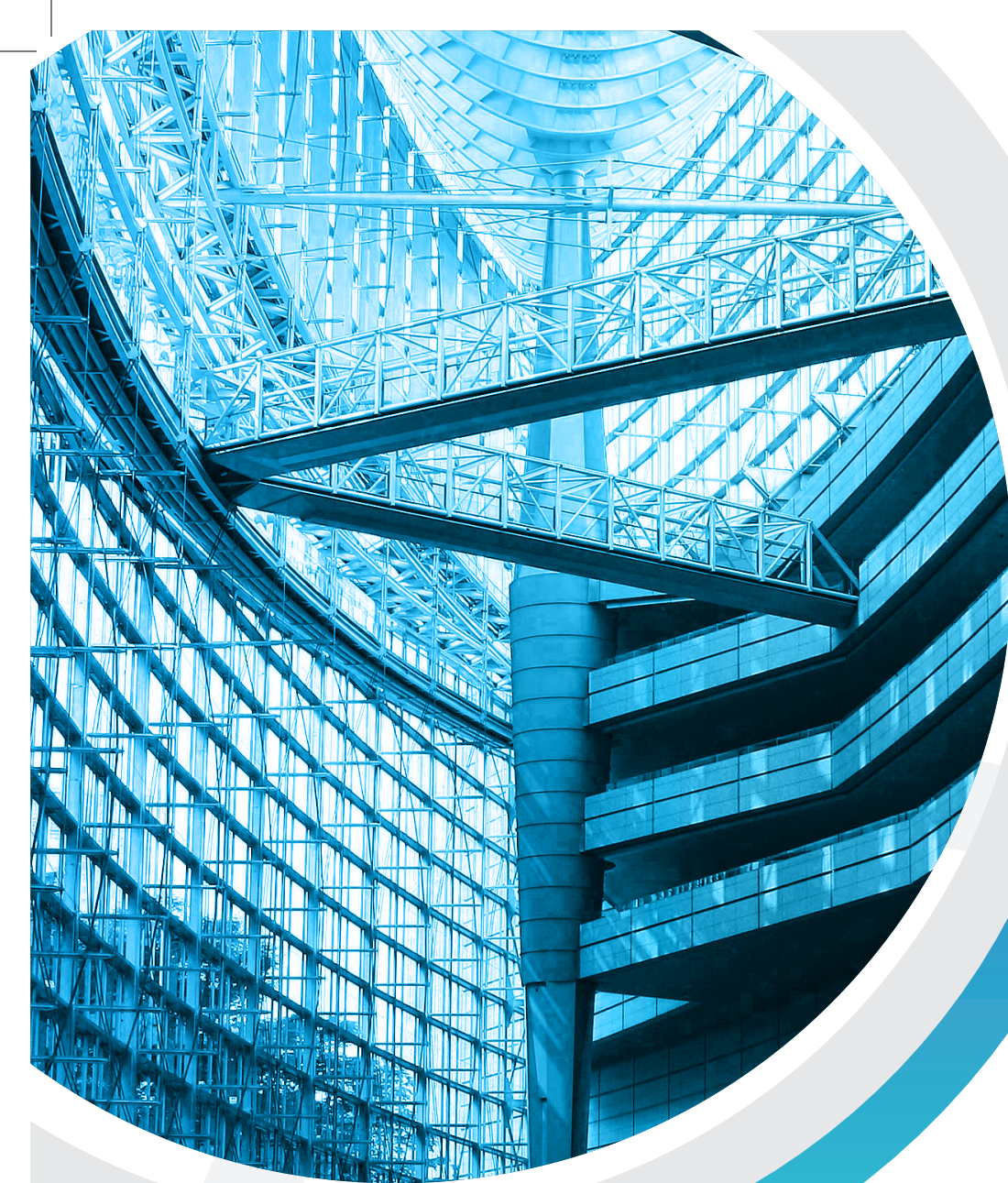


BENDMAK USA[®]

BENDING & DRILLING & WELDING SOLUTIONS



**B3DL 1200 &
B3DL 1200 ECO**



BENDMAK
BENDING & DRILLING & WELDING SOLUTIONS

FABRICATING MACHINERY & WELDING SOLUTIONS

The most effective solutions to the steel fabricating industry

Bendmak was founded in Bursa, Turkey in 2008. Since the first day, Bendmak has made an impression on clients with its fast response capability and meticulous understanding of customer needs. Bendmak has earned trust in the market with its reliable solutions that exceed customer expectations.

Bendmak continuously develops technology and improves quality of service with an innovative mindset. Its advanced manufacturing capabilities also separate Bendmak from typical machinery manufacturers, which enables us to boost production efficiency, quality and speed.

Having certifications such as ISO:9001 which approve its international quality standards, and compliance with CE norms, Bendmak provides synchronized and unparalleled service from initial contact through delivery and to after-sales.

Plate and Angle Rolls: 3 and 4 Roll Hydraulic Plate and Profile Rollers

Structural Steel and Plate Processing: Single and Three Spindle Drill Lines, Plasma Cutting Tables, Plate Drilling Machines, Combined Oxy-Plasma & Drilling Machines, Punching Machines, Bandsaws

Dishing and Flanging Machines

Welding Solutions: Column-Boom Welders, Tank Rotators and Welding Positioners, Rope and Chain Rotators, H-Profile Welding and Straightening Lines



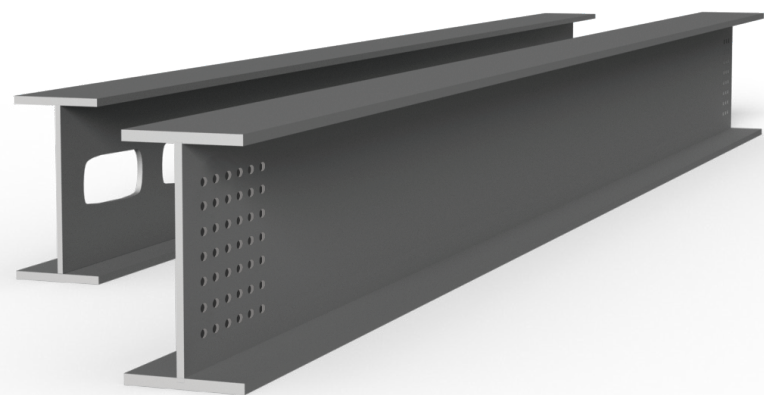
B3DL 1200

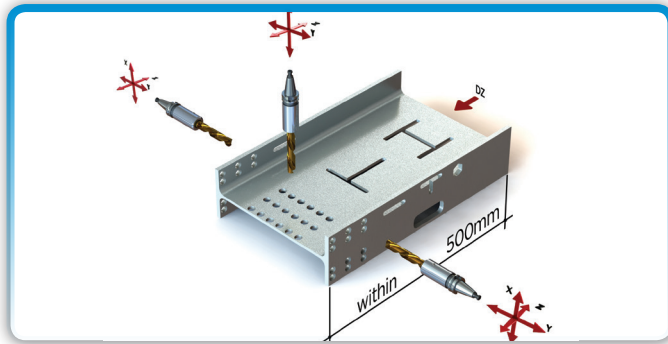
10-AXIS THREE SPINDLE BEAM DRILL LINE

“The most effective equipments available to the structural steel industry”

B3DL has 3 independent spindle units which enables simultaneous processing on three sides of a profile. Equipped with sub-axes, the drill heads process materials without repositioning them. This feature results in significant time saving and reduction in operational costs.

The B3DL, which has extensive functional capabilities such as drilling, thread tapping, milling, scribe marking and countersinking, processes structural steels with high precision.





1 - Sub-axis

- Eliminates material movement for precision and maximum speed.
- Spindle moves in horizontal plane up to 20" for maximum efficiency while the material is kept stationary.



2 - Spindle motors

- High torque spindle motors at 3000 rpm
- Powerful 30 HP spindle motors



3 - Feeding Arm

- Servo driven rack and pinion system ensures precise motions
- This system is not effected by scale, rust and weather conditions



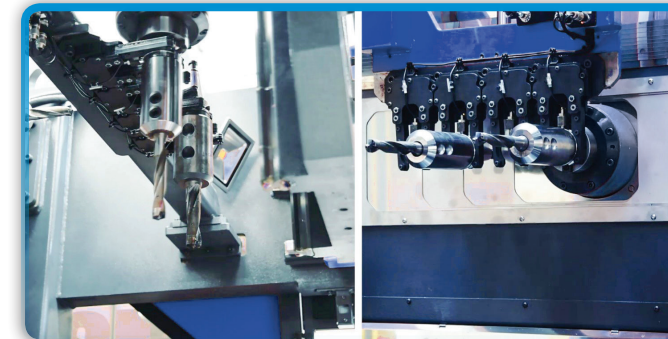
4 - Axis motions

- Servo driven ball screws ensure precise axis motions
- Roller linear guides provide high rigidity and a loading capacity



5 - Scribe Marking

- Available on up to 4 surfaces
- High readability even after painting or blasting processes



6 - Automatic Tool Changer

- Three automatic tool changers, each with 4 stations
- Eliminates manual tool change reducing downtime.



7 - Robust Clamping

- Deflection and vibrations generated during processing are prevented
- Longer tool life and better drill quality



8 - Slot Making

- Slotting capability without moving materials within 20" in the length

B3DL 1200 ECO

7-AXIS THREE SPINDLE BEAM DRILL LINE



B3DL ECO is a budget-friendly drill line with 3 spindle for the fabricators with limited source but who also want to stay competitive. On the B3DL ECO model, material is repositioned after each horizontal drilling operation (z-axis).



Technical Specifications	B3DL 1200	B3DL 1200 ECO
Control Panel	Mitsubishi/ Siemens	Mitsubishi/ Siemens
Number of Drilling Units - Vertical	1 Vertical	1 Vertical
Number of Drilling Units - Horizontal	2 Horizontal	2 Horizontal
Drilling diameter	3/8" - 1-1/2"	3/8" - 1-1/2"
Spindle Speed	50-3000 rpm	50-3000 rpm
Spindle Motor Power	30 HP / 103 lbf.ft	30 HP / 103 lbf.ft
Spindle torque	206 lbf.f t	206 lbf.ft
Automatic Tool Changing Unit	For each spindle one ATC with 4 tools	For each spindle one ATC with 4 tools
Tool Cooling System	MQL	
Tapping Tool for each drilling axes (Optional)	M10 - M24 (with special set)	M10 - M24 (with special set)
Beam width	48"	48"
Beam Height	20"	20"
Tool Holder	BT 40 (internal coolant hole)	BT 40 (internal coolant hole)
Weight	28,660 lbs	24,250 lbs
Machine Dimensions	7,9' x 23,0' x 10,5'	7,6' x 17,7' x 10,0'
Scribe Marking	3 Side Standard, 4th is Optional	On one side



BENDMAK USA[®]

BENDING & DRILLING & WELDING SOLUTIONS

Address: 10417 South County Road 39 Lithia, FL 33547

Phone: 833-236-3625

E-mail: info@bendmakusa.com

